



## Regional Workshop on SDG's Asia Pacific



Monday 24 March 2025 at 6 am GMT



SUSTAINABLE  
DEVELOPMENT GOALS  
WORKING GROUP



# SDG 13 - CLIMATE ACTION

## Implementation of Wonderful Indonesia Sustainable Experience (WISE) Trips: The Journey of Low Carbon Tourism in Raja Ampat UGGp

*Raja Ampat UNESCO Global Geopark*

**Ana R Septiana**

Ecologist of Raja Ampat UGGp

ana.rseptiana@gmail.com



# SDG 13: CLIMATE ACTION



Map of Southwest Papua

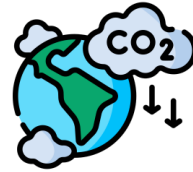


Map of Indonesia



## [Best practice]: Introduction / Main targets

Tourism is a sector that significantly impacts the Indonesian economy.



Tourism contributes **8% of global carbon emissions.**



Reduce tourism-related **carbon footprints.**



Raja Ampat, a world-class diving site, faces threats from **coral bleaching & ecosystem degradation.**



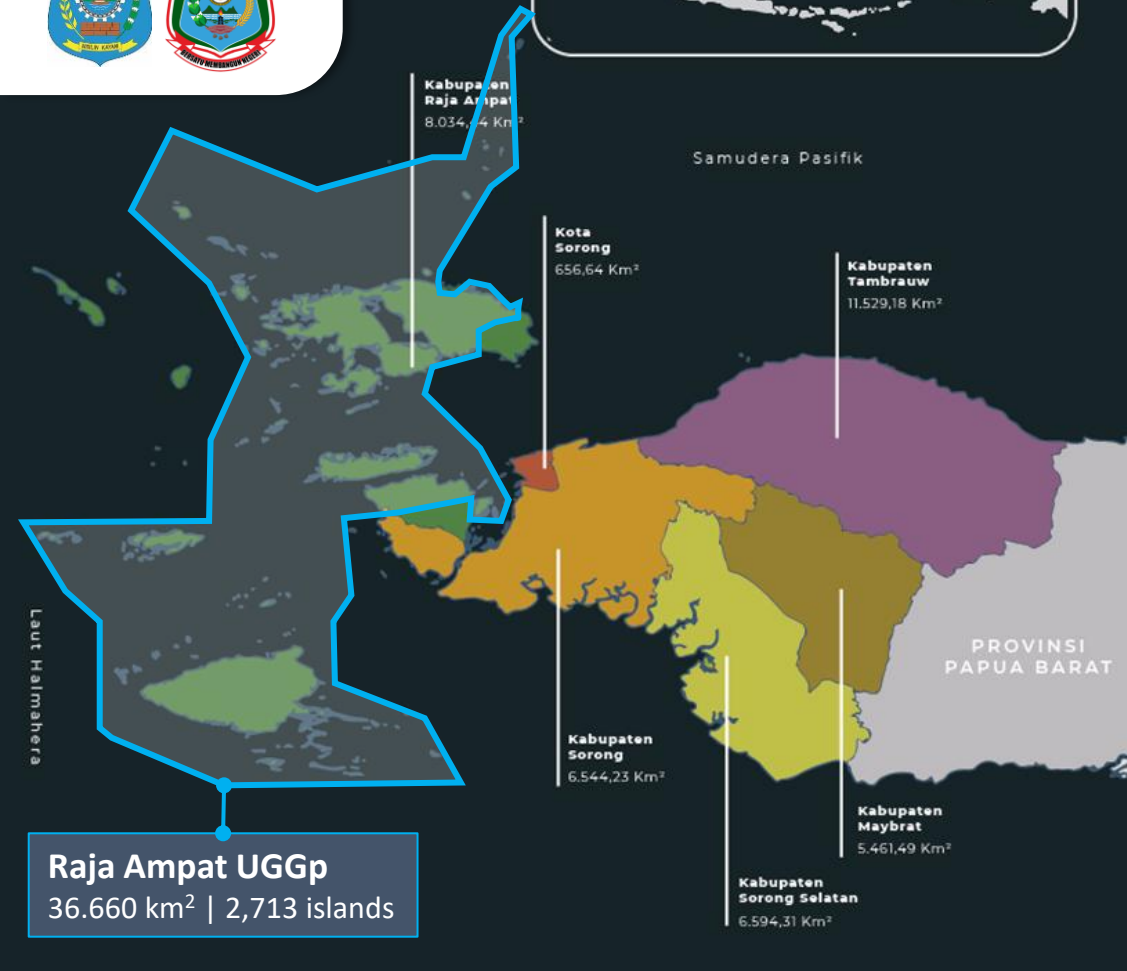
Implement **sustainable geotourism** activities.



Need for **low-carbon tourism** to ensure environmental sustainability while benefiting local communities.



Engage local communities in **climate action & conservation.**



# [Best practice]: Implementation

## KEY STRATEGIES FOR LOW-CARBON TOURISM



### CO<sub>2</sub>e Counting on Geotrails

Eco-friendly itineraries like "Cruising the Sea of Legends."



### Community-Based Tourism

Locals participate in eco-tourism and conservation programs.



### Carbon Offsetting

Tourists plant mangrove trees managed by BUMDES (Village-Owned Enterprises).



### Waste & Energy Management

Sustainable accommodation & reduced plastic usage.



1 WISE Trips Southwest Papua Tour Package Book, "The Low Carbon Journey of Southwest Papua"



4 Rebranding Raja Ampat and Southwest Papua as one of the World's Low Carbon Ecotourism Destinations.



3 Governor Regulation No. 15 of 2024 concerning the Implementation of WISE Trips to Support Sustainable Tourism in Southwest Papua.



2 Certificate Partner for tourism industry who support.





## [Best practice]: Contribution to the SDG

WISE Trips Align with 10 of 17 UN SDGs

Coral reef conservation & responsible diving.



Reducing tourism emissions & planting trees.

Supporting local communities with eco-tourism jobs.

Protecting biodiversity through sustainable land use.

Minimizing tourism waste & resource use.

## Results achieved / Impact

### Carbon Emissions Calculation

Total Emissions: 0.09 ton CO<sub>2</sub>e / person



Transportation\*



Activity



Food & Beverages\*\*

### MEASURABLE IMPACT

- Carbon Emission Reduction:** Each tourist trip emits **0.098 tons of CO<sub>2</sub>e**, offset through mangrove planting → *at least 1 tree*
- Community Empowerment:** Local businesses and BUMDES benefit from eco-tourism → *mangroves nursery run by villagers*
- Conservation Success:** Increased awareness & protection of Raja Ampat's marine and terrestrial ecosystems → *Ocean debris action*



### CARBON OFFSET

In Geotrail "Cruising to the Sea of The Legend"

"...the average amount of CO<sub>2</sub> absorbed by a mangrove forest is 308kg (0.3 tonnes) of CO<sub>2</sub> per tree. With an average tree growth life of 25 years, a hectare of mature mangrove forest absorbs 840 metric tonnes. This means that one mangrove tree removes 308kg (0.3 tonnes) of CO<sub>2</sub> from the atmosphere over its growth life, which is 12.3kg per year."  
<https://moretrees.eco/how-much-carbon-does-a-tree-absorb/2644/>

Ideally, every tourist who goes on the "Cruising to the Sea of The Legend" geotrail trip must offset their carbon emission by planting 3 mangrove trees.

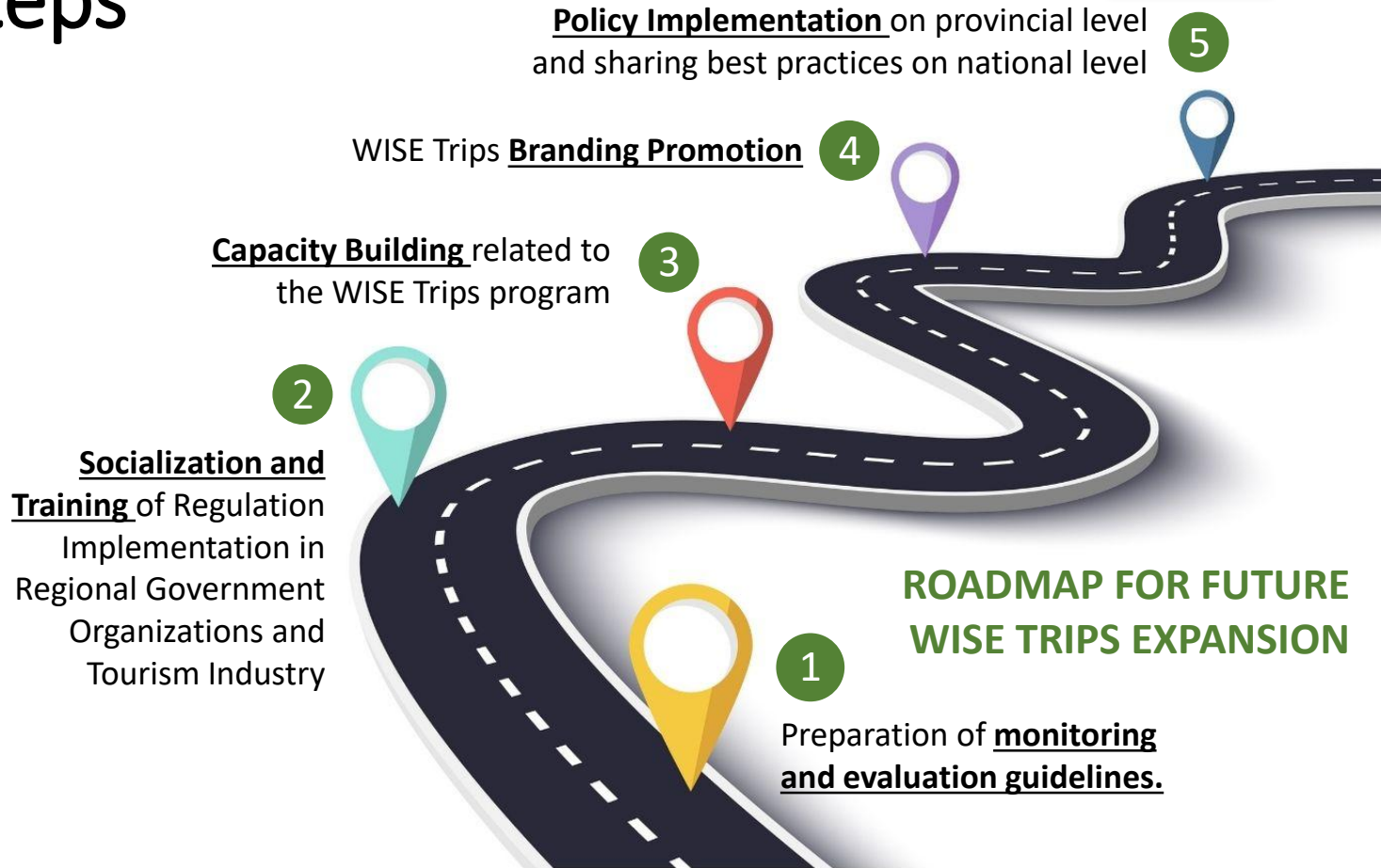


## Lessons learned / Future steps



### KEY TAKEAWAYS

- 1. Sustainability Requires Collaboration:** Government, private sector, and communities must work together.
- 2. Tourist Engagement is Key:** Travelers must be educated on **responsible tourism**.
- 3. Long-Term Monitoring Needed:** Ongoing assessment of carbon footprint & conservation efforts.



More information about the best practice: [www.rajaampatgeopark.com](http://www.rajaampatgeopark.com)





For more complete information, please visit this webpage, you can download The Book, The Paper, and Watch Documentary videos.



[bit.ly\\_WISERajaAmpat](https://bit.ly_WISERajaAmpat)

## Wonderful Indonesia Sustainable Experience Trips **WISE TRIPS**

### CLOSING STATEMENTS

1. Raja Ampat's beauty depends on responsible tourism.
2. WISE Trips prove that low-carbon tourism is possible!
3. Let's travel sustainably and protect our planet together!
4. Join the movement & be part of the solution!